



Holiday Inn Express

"Change is happening"

Our design objective for the Holiday Inn Express' identity launch was to evolve the current look into a high style yet welcoming atmosphere. This vision was achieved by uniting warm, inviting colors with furnishings that reflected straight, clean lines.



before photos

Listen. Inspire. Create



INVITING AND CONTEMPORARY

Another element that contributed to the atmosphere - a blending of design sophistication and inviting spaces - was the addition of luxury features such as the flat screen television and the fireplace. The dark-stained wood fireplace with stainless steel accents works wonderfully to warm up the contemporary setting and make guests feel right at home. To complete the ambiance, the same design elements are given to the front desk area.

The modern design of the custom staircase is an architectural feature that accentuates the sharp furnishings. The carpet was also custom designed to tie in the established color palette.

The previous need for additional dining seating was met by reconfiguring the layout to expand the tables and chairs into the lounge area. This gave a more open feel to the rooms and easily lent itself to multiple layouts and functions for the area.





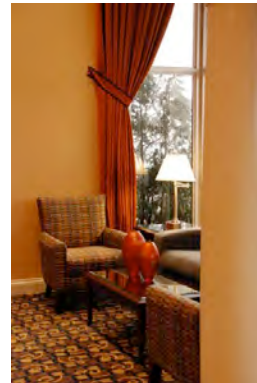
AMENITIES

Design and function were equal considerations for the complete re-design of the breakfast station. The tiled back wall provides practicality while beckoning the eye, creating a fitting focal point for the room.

Function, durability and style were of equal importance for the remodeling of this hotel. The success of the renovation is heard in the comments of both the guests and employees.

Project Testimonial

"Kelly and Susan made the renovation process as painless as possible and the finished product made it all the worthwhile. Our guest's reaction when walking in the lobby, for the first time, is so positive that I would recommend a major renovation to any property." Bob Lungeland, Hotel Manager



As always we greatly appreciate your business and your referrals. If you have a design project at home or at your office please call us or email, kelly@interiorenhancementgroup.com to discuss your needs.



411 Lauder Lane • Inverness, IL 60067 • 847.705.9569
www.interiorenhancementgroup.com