

## MEDSPA

**“The care of a physician; the feel of a spa”**

The design directive for this medspa project was, “the care of a physician; feel of a spa”. The soothing sound of running water over the slate inscribed signage and the beautiful scent of natural oils compliment the visual tranquility of the reception area, immediately conveying the “feel of a spa”.



# *Listen. Inspire. Create*



## **SERENITY**

We established the feeling of serenity through the use of calming earth tone colors and natural design elements, such as the wood floors, stone countertops and river rock accents. Accessorizing with grasses continued to bring in the calming effects of nature.

The relaxing atmosphere was heightened by the softening components such as sweeping panels of fabric, upholstered furniture and inviting area rugs.

The custom cabinetry in wenge finish, accented by the floating glass shelves, offers a simple yet high style backdrop form which to highlight the products available for sale at the medspa.



## PRIVACY

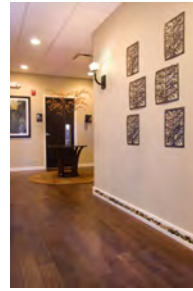
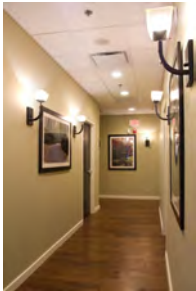
The privacy of the secondary reception area is a peaceful oasis to relax between treatments. This feeling is established via the inviting appeal of a high back chenille covered chair, the organic lines of the area rug, as well as the dim glow of pendant lighting.

No detail was left unearthed, as seen through the clever use of nature's river rocks as a design element in the sink and as added architectural interest along the hallway's baseboards.



*We had the good fortune of the involvement of Interior Enhancement Group from the beginning of our project. They worked closely with our builder and facility staff to convert our "empty box" into an extremely functional and serene medical spa. Our facility is warm, rich and inviting. I enthusiastically recommend their services.*

*-Dr. Thomas A. Heggen*



As always we greatly appreciate your business and your referrals. If you have a design project at home or at your office please call us or email, [kelly@interiorenhancementgroup.com](mailto:kelly@interiorenhancementgroup.com) to discuss your needs.



411 Lauder Lane • Inverness, IL 60067 • 847.705.9569  
[www.interiorenhancementgroup.com](http://www.interiorenhancementgroup.com)